

Trademarks are property of their respective owners. Nintendo 2DS and Nintendo 3DS are trademarks of Nintendo. © 2016 Nintendo Co., Ltd.

This product includes RSA BSAFE® Cryptographic software of EMC Corporation. RSA and BSAFE are registered trademarks or trademarks of EMC Corporation in the United States and other countries. ©2005 EMC Corporation. All rights reserved.

This product uses the LC Font by Sharp Corporation. LCFONT, LC Font and the LC logo mark are trademarks of Sharp Corporation.

This product includes speech rate conversion software developed by Toshiba corporation. Copyright © 2008 TOSHIBA CORPORATION Ubiquitous TCP/IP+SSL Copyright © 2001 – 2010 Ubiquitous Corp.

\*QR code reader\* includes software deliverables of Information System Products Co., Ltd. and Institute of Super Compression Technologies, Inc. QR Code is a registered trademark of DENSO WAVE INCORPORATED in JAPAN and other countries.

This product contains NetFront Browser NX of ACCESS CO., LTD. ACCESS, ACCESS logo and NetFront are registered trademarks or trademarks of ACCESS CO., LTD. in the United States, Japan and / or other countries. © 2011 ACCESS CO., LTD. All rights reserved.

THIS PRODUCT IS LICENSED UNDER THE MPEG-4 SYSTEMS PATENT PORTFOLIO LICENSE FOR ENCODING IN COMPLIANCE WITH THE MPEG-4 SYSTEMS STANDARD. EXCEPT THAT AN ADDITIONAL LICENSE AND PAYMENT OF ROYALTIES ARE NECESSARY FOR ENCODING IN CONNECTION WITH (i) DATA STORED OR REPLICATED IN PHYSICAL MEDIA WHICH IS PAID FOR ON A TITLE BY TITLE BASIS AND / OR (ii) DATA WHICH IS PAID FOR ON A TITLE BY TITLE BASIS AND IS TRANSMITTED TO AN END USER FOR PERMANENT STORAGE AND / OR USE. SUCH ADDITIONAL LICENSE MAY BE OBTAINED FROM MPEG LA, LLC. SEE <[HTTP://WWW.MPEGLA.COM](http://WWW.MPEGLA.COM)> FOR ADDITIONAL DETAILS.



#### DECLARATION OF CONFORMITY / DÉCLARATION DE CONFORMITÉ

Hereby, Nintendo declares that the radio equipment type (Nintendo 2DS) is in compliance with Directive 2014/53/EU.

The full text of the EU declaration of conformity is available at the following internet address: <http://docs.nintendo-europe.com>

For explanation of the symbols and markings used on this product, see <http://docs.nintendo-europe.com>

European Registered Design: 2382457.



Manufacturer: Nintendo Co., Ltd., Kyoto 601-8501, Japan  
Importer in the EU: Nintendo of Europe GmbH, Herriotstrasse 4,  
60528 Frankfurt, Germany

MKB-FTR-S-UKV-CO

# NINTENDO 2DS™

Nintendo

## Operations Manual

Nintendo may change product specifications and update this information from time to time. The latest version of the manual is available at <http://docs.nintendo-europe.com>. (This service may not be available in some countries.)

### Health and Safety Information

Please read and observe the health and safety information. Failure to do so could result in injury or damage. Adults should supervise the use of this product by children.

#### ⚠ WARNING – Seizures

- Some people (about 1 in 4000) may have seizures or blackouts triggered by light flashes or patterns, and this may occur while they are watching TV or playing video games, even if they have never had a seizure before. Anyone who has ever experienced seizures, loss of awareness or any other symptom linked to an epileptic condition should consult a doctor before playing video games.
- Stop playing and consult a doctor if you have any unusual symptoms, such as: convulsions, eye or muscle twitching, loss of awareness, altered vision, involuntary movements, or disorientation.
- To reduce the likelihood of a seizure when playing video games:
  - Do not play if you are tired or need sleep.
  - Play in a well-lit room.
  - Take a break of 10 to 15 minutes every hour.

#### ⚠ WARNING – Eye Strain, Motion Sickness and Repetitive Motion Injuries

- Avoid excessively long play sessions.
  - Take a break of 10 to 15 minutes every hour, even if you don't think you need it.
  - Stop playing if you experience any of these symptoms:
    - If your eyes become tired or sore, or if you feel dizzy, nauseated or tired;
    - If your hands, wrists, or arms become tired or sore, or if you feel tingling, numbness, burning or stiffness or other discomfort.
- If any of these symptoms persist, consult a doctor.

#### ⚠ WARNING – Battery

This system contains a rechargeable lithium ion battery. Leakage or combustion of the battery can cause personal injury as well as damage to your system.

- To avoid battery leakage or combustion:
  - Do not damage the battery.
  - Do not expose the battery to excessive physical shock, vibration, or liquids.
  - Do not disassemble, deform or attempt to repair the battery.
  - Do not expose the battery to heat or dispose of it in a fire.
  - Do not touch the terminals of the battery with any foreign materials or metal objects.
  - Always attach the battery cover.
- In case of leakage: If the battery leaks, do not touch it, and contact Nintendo Customer Support. To ensure any leaked fluid on the system doesn't come into contact with your hands, wipe the exterior of the system thoroughly with a soft, slightly damp cloth. If the leaked fluid comes into contact with your hands or any other part of your body, rinse it away with water. If liquid leaking from a battery comes into contact with your eyes, it can cause injury. Immediately rinse your eyes with plenty of water and consult a doctor.

#### ⚠ WARNING – Electrical Safety

- Only use the Nintendo 3DS Battery Pack (CTR-003).
- Connect the AC adapter to the correct voltage (AC 220-240V).
- Do not use voltage transformers or plugs that deliver reduced amounts of electricity.
- The AC adapter should be plugged into a nearby, easily accessible socket.
- The AC adapter is for indoor use only.
- If you hear a strange noise, see smoke or smell something strange, unplug the AC adapter from the socket and contact Nintendo Customer Support.
- Do not expose devices to excessive force, fire, microwaves, high temperatures or direct sunlight. Do not pull on cables and do not twist them too tightly.
- Do not let devices come into contact with liquid and do not use them with wet or oily hands. If liquid gets inside, stop using and contact Nintendo Customer Support.
- Do not touch device connectors with your fingers or metal objects.
- Do not touch the AC adapter or connected devices while charging during a thunderstorm.
- Use only compatible accessories that have been approved for use in your country.
- Do not disassemble or try to repair devices. If devices are damaged, stop using them and contact Nintendo Customer Support. Do not touch damaged areas. Avoid contact with any leaking fluid.

## WARNING – General

- Keep this system, its accessories and packaging materials away from young children. Small parts such as Game Cards, SD cards and packaging items may be swallowed. The cables can coil around the neck.
- Do not use this system within 25 centimetres (10 inches) of a cardiac pacemaker while using wireless communication. If you have a pacemaker or other implanted medical device, first consult a doctor.
- Wireless communication may not be allowed in certain places such as aeroplanes or hospitals. Please follow respective regulations.
- Do not use excessive volume for headphones. This may damage your hearing. Keep the volume at a level at which you can hear your surroundings. Consult a doctor if you experience symptoms such as buzzing in your ears.

## CAREFUL USAGE

- Do not place the system in humid areas or areas where the temperature can suddenly change. If condensation forms, turn the power off and wait until the water droplets have evaporated.
- If devices become dirty, wipe them with a soft, dry cloth. Avoid using thinner, benzene or alcohol.
- Be aware of your surroundings while playing.
- Make sure to charge the built-in battery at least once every six months. If the battery is not used for an extended period of time, it may become impossible to charge it.

## Getting Started

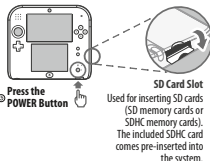
### 1 Charge the system



### 3 Insert a Game Card and start playing



### 2 Turn the system on and follow the on-screen instructions to configure it

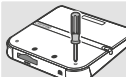


## Replacing the Battery

Always turn the power off and disconnect the AC adapter before replacing the battery.

### 1 Loosen battery cover

Use a cross-head screwdriver that fits in the two screw heads.



### 2 Remove battery cover

Slide a flathead screwdriver or similar item in between the battery cover and the system, and prise the two carefully apart.



Note:  
Do not insert your fingernails in between the cover and the system, as this could result in injury.

### 3 Remove battery

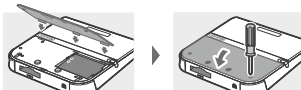


### 4 Wait at least 10 seconds, then insert new battery



Note:  
Ensure that the battery is facing in the right direction.

### 5 Attach battery cover and tighten both screws



Repeated charging will decrease battery life and reduce the length of time you can use the system before recharging. If usage time is noticeably reduced, replace the battery using the procedures detailed in this section. **Please contact Nintendo Customer Support for further information on where to purchase a replacement.**

## IMPORTANT INFORMATION FOR PARENTS – PLEASE READ!

Your system offers a variety of exciting features, but not all of them may be suitable for children. We have prepared special steps to make your system safe for your child.

During the initial setup of your system, you will be asked to set Parental Controls. Touch SET to begin, then follow the on-screen instructions. You can set various restrictions, including restricting software by age rating, preventing internet access, restricting shopping services, preventing image/video sharing, preventing online interaction and more.

Choose a PIN code to ensure that your child cannot change the settings you made.

To use Parental Controls or to change the settings after the initial setup has been completed, open the System Settings from the HOME Menu and select PARENTAL CONTROLS.

In addition, you can restrict your child's use of Nintendo Network™ services from PCs, smartphones and other devices. This option will be offered automatically when a Nintendo Network ID is first created or linked, and can be changed at any time by touching ACCESS FROM PCS AND OTHER DEVICES in the Nintendo Network ID Settings. Please also make sure that you have set up a PIN code in Parental Controls as detailed above to ensure that your child cannot make changes to settings.


## If you own another Nintendo 3DS system . . .

It is recommended that you transfer data to your new system before you play.

**CAUTION:** If you use software on this system before transferring data from your old Nintendo 3DS™ system, any save data created for downloadable or built-in software on this system will become unusable after the transfer. Also, if you link a new Nintendo Network ID to this system, it will no longer be possible to transfer data from a system linked to a different Nintendo Network ID.

For more information about performing system transfers, please visit the Nintendo Support website at [support.nintendo.com](http://support.nintendo.com)

## Activating and Deactivating Wireless Communication

To activate or deactivate wireless communication, touch  in the upper-left corner of the Touch Screen while on the HOME Menu to open the HOME Menu Settings, then touch ON or OFF under Wireless Communication.

## Warranty Information

To find out how to receive warranty information, see [support.nintendo.com](http://support.nintendo.com)

## Disposal of this Product

Do not dispose of this product or the battery inside in household waste. For details see <http://docs.nintendo-europe.com>

## Technical Specifications

Operating frequency band(s)	2412-2472MHz
Maximum radio-frequency power	7dBm

## Support Information

Nintendo Customer Support (UK and Ireland)

[180416/UKV]

### Nintendo Customer Support customer-support@nintendo.co.uk

[www.nintendoservicecentre.co.uk](http://www.nintendoservicecentre.co.uk) (for support and repairs)  
[www.nintendo.co.uk](http://www.nintendo.co.uk) (for general enquiries)

PO Box 4678, Windsor, SL4 9DZ  
United Kingdom  
(+44) 0345 60 50 247

(UK: Calls charged at the national rate. • Ireland: Calls charged at the international rate of the service provider.)