

Connect to the internet

Make the most of your system by creating a Nintendo Network ID.



A Nintendo Network ID allows you to enjoy various features of Nintendo Network offered by Nintendo.

Note: A Nintendo Network ID is different to a Club Nintendo account.

Nintendo eShop

Get demos and a variety of free software.



Miiverse

Chat about your favourite games.



and more...



You can use your Nintendo eShop funds on both your system and a Wii U™ console.



You can create a new Nintendo Network ID on your system or link an existing Nintendo Network ID that you have already created on a Wii U console. Adults should create or link a Nintendo Network ID for their children.

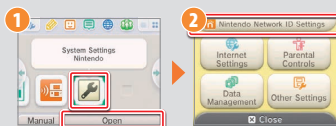


If you own another Nintendo 3DS system and want to transfer data to your new system...

Do not create or link a Nintendo Network ID to the new system before the transfer, otherwise you will be unable to transfer data.

Configure settings

Open the System Settings on the HOME Menu, and then touch NINTENDO NETWORK ID SETTINGS to configure settings for an ID.



Nintendo®

new NINTENDO 3DS™

new NINTENDO 3DS™ XL

Quick-Start Guide

This guide explains how to configure your system, launch software and connect to the internet.



Initial Settings



Internet Settings



Nintendo Network™ ID Settings

IMPORTANT

An adult should configure the system if it is to be used by children.

Note:

- All illustrations in this guide show the New Nintendo 3DS™ system.
- Be sure to read the Health and Safety Information section of the Operations Manual before use, and follow the instructions carefully.

Trademarks are property of their respective owners. Nintendo 3DS is a trademark of Nintendo. © 2014 Nintendo Co., Ltd.

Nintendo®

MKA-KTR-S-UKV-C2

IMPORTANT INFORMATION FOR PARENTS PLEASE READ!

Your system offers a variety of exciting features, but not all of them may be suitable for children. We have prepared special steps to make your system safe for your child.

During the initial setup of your system, you will be asked to set Parental Controls.

Touch **SET** to begin, then follow the on-screen instructions.

Choose a PIN code to ensure that your child cannot change the settings you made.

You can then set the following restrictions which are enabled by default:

- **SOFTWARE RATING** restricts what games your child can play by age rating.
- **INTERNET BROWSER** prevents your child from browsing the internet.
- **NINTENDO 3DS SHOPPING SERVICES** restricts your child's use of Nintendo eShop and any other Nintendo 3DS shopping services.
- **DISPLAY OF 3D IMAGES** disables the 3D feature. The use of the 3D feature by children aged six and under may cause vision damage. It is highly recommended that only children over six should use the system in 3D mode.
- **MIIVERSE** restricts Miiverse™ functionality.
- **SHARING IMAGES / AUDIO / VIDEO / LONG TEXT DATA** prevents your child from sending and receiving photos, images, sounds, videos and long messages.
- **ONLINE INTERACTION** prevents your child from any online communication in games.
- **STREETPASS** switches off StreetPass™. StreetPass allows automatic exchange of photos, images, videos and other content between two Nintendo 2DS™ / Nintendo 3DS systems that are close to each other.
- **FRIEND REGISTRATION** restricts registration of new friends. Registered friends can see the online status of your child and freely exchange messages and other content with your child.
- **DS DOWNLOAD PLAY** prevents your child from downloading Nintendo DS™ demos and playing multiplayer games using local wireless communication.
- **VIEWING DISTRIBUTED VIDEOS** restricts the distributed videos your child can view.

Make sure you select **DONE** to save your settings.

To use Parental Controls or to change the settings after the initial setup has been completed, open the System Settings from the HOME Menu and select **PARENTAL CONTROLS**.

In addition, you can restrict your child's use of Nintendo Network™ services from PCs, smartphones and other devices. This option will be offered automatically when a Nintendo Network ID is first created or linked, and can be changed at any time by touching **ACCESS FROM PCS AND OTHER DEVICES** in the Nintendo Network ID Settings. Please also make sure that you have set up a PIN code in Parental Controls as detailed above to ensure that your child cannot make changes to settings.

Thank you. With these available options, your child will be able to safely enjoy using your system.

If children will be using this system, a parent or legal guardian should set up these restrictions as required.

Set

Do Not Set

Contents

| | | | |
|---|---|-------------------------------|---|
| If you own another Nintendo 3DS system and want to transfer data to your new system ... | 3 | Configure the system | 5 |
| Charge and turn on the system | 4 | Start software | 6 |
| | | Connect to the internet | 7 |

If you own another Nintendo 3DS system and want to transfer data to your new system

Transfer your data before playing.

After configuring initial settings for this system, owners of a system in the Nintendo 3DS family should perform a system transfer before play.

CAUTION

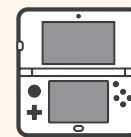
If you have played on this system before transferring data from your old Nintendo 3DS system, then any save data created for downloadable or built-in software on this system will become unusable after the transfer.



System Transfer

Nintendo 3DS / Nintendo 3DS XL / Nintendo 2DS

New Nintendo 3DS / New Nintendo 3DS XL



Software save data,
Nintendo Network ID, etc.

Caution when removing microSDHC memory card

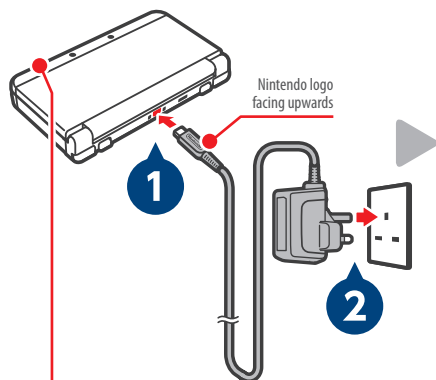
Be sure to **push the microSD card in** until it clicks and pops out, then remove it. Failure to do so may lead to damage to the microSD card slot.



Please refer to the Operations Manual for further details about system transfers and removing the microSD card.

1 Charge and turn on the system

Charge



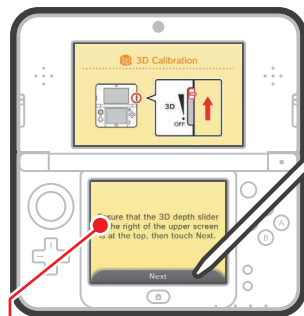
Note: The illustration above shows the UK version of the AC adapter.

Turn the power on

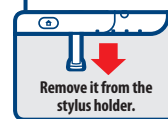


2 Configure the system

Initial settings



The stylus is used to operate the Touch Screen.



Complete setup



To complete the setup, press the HOME Button to display the HOME Menu.

Settings Screen

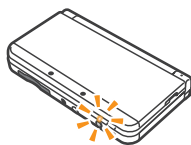
Please follow the instructions to configure the system after turning it on for the first time.

- Language ▶ 3D Calibration ▶ Date and Time ▶
- Profile ▶ Internet Settings ▶ Parental Controls ▶
- System Transfer

Please refer to the "Connect to the internet" section for more details about connecting to the internet.

Recharge LED

LED lit – charging
LED off – charging complete

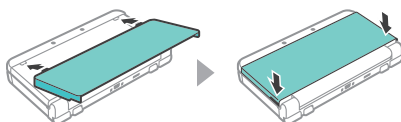


This package does not include an AC adapter.

To recharge your system, you will need a Nintendo 3DS AC adapter (WAP-002(UKV)/WAP-002(EUR)) (sold separately).

New Nintendo 3DS

Please attach the front plate before using the system.



3 Start software

Insert the Game Card



Open the software



Touch the icon for the software you want to use, then touch **OPEN**.

Inserting the Game Card

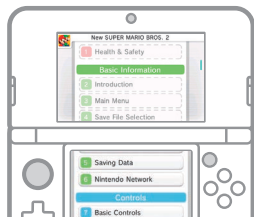
Check which way the Game Card and the system are facing. Ensure that the power is turned off, or that the HOME Menu is displayed and no software is currently suspended, before inserting or removing a Game Card.



You can purchase the downloadable version of a title and play it wherever you go.

Need help?

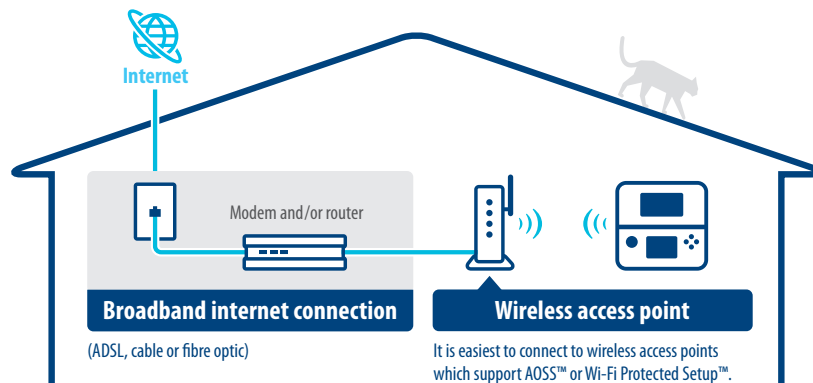
Just touch **MANUAL** to get help from the electronic manual of the software that you have selected.



Connect to the internet

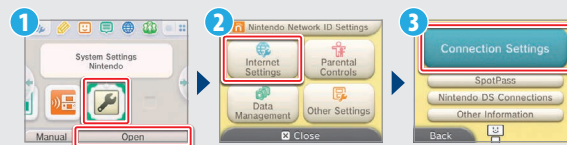
Prepare your wireless access point

A wireless connection is required to connect to the internet. A computer is needed to configure the settings on your wireless access point (router).



Configure settings

Open the System Settings, then touch **INTERNET SETTINGS**, and then **CONNECTION SETTINGS**.



Activating and deactivating wireless communication

To activate or deactivate wireless communication, touch  in the upper-left corner of the Touch Screen while on the HOME Menu to open the HOME Menu Settings, then touch **ON** or **OFF** under Wireless Communication.

Please refer to the Operations Manual for further details.