

Rhythm Paradise™ Megamix

1 Important Information

Basic Information

2 Online Features

3 Parental Controls

How to Play

4 About This Game

5 Getting Started

6 Saving/Deleting Data

Game Modes

7 Story Mode

8 Challenge Land

9 Café

Support Information

10 How to Contact Us

Please read this manual carefully before using this software. If the software is to be used by young children, the manual should be read and explained to them by an adult.

- ◆ Unless stated otherwise, any references to "Nintendo 3DS" in this manual apply to all systems in the Nintendo 3DS™ family.
- ◆ When playing on a Nintendo 2DS™ system, features which require closing the Nintendo 3DS system can be simulated by using the sleep switch.

IMPORTANT

Important information about your health and safety is available in the Health and Safety Information application on the HOME Menu. You should also thoroughly read the Operations Manual, especially the "Health and Safety Information" section, before using Nintendo 3DS software.

Language Selection

The in-game language depends on the one that is set on the system. This title supports five different languages: English, German, French, Spanish and Italian. If your Nintendo 3DS system language is set to one of these, the

same language will be displayed in the software. If your Nintendo 3DS system is set to another language, the in-game default language will be English.

For instructions about how to change the system language, please refer to the System Settings electronic manual.

Age Rating Information

For age rating information for this and other software, please consult the relevant website for the age rating system in your region.

PEGI (Europe):
www.pegi.info

USK (Germany):
www.usk.de

Classification Operations Branch
(Australia):
www.classification.gov.au

OFLC (New Zealand):
www.classificationoffice.govt.nz

Russia:
minsvyaz.ru/ru/documents/

Advisories

This software (including any digital content or documentation you download or use in connection with this software) is licensed by Nintendo only for personal and non-commercial use on your Nintendo 3DS system. Your use of

any network services of this software is subject to the Nintendo 3DS Service User Agreement and Privacy Policy, which includes the Nintendo 3DS Code of Conduct.

Unauthorised reproduction or use is prohibited.

This software contains copy protection technology to prevent reproduction and copying of content.

Your Nintendo 3DS system and software are not designed for use with any existing or future unauthorised technical modification of the hardware or software or the use of any unauthorised device in connection with your Nintendo 3DS system.

After the Nintendo 3DS system or any software is updated, any existing or future unauthorised technical modification of the hardware or software of your Nintendo 3DS system, or the use of any unauthorised device in connection with your Nintendo 3DS system, may render your Nintendo 3DS system permanently unplayable. Content deriving from the unauthorised technical modification of the hardware or software of your Nintendo 3DS system may be removed.

This software, instruction manual and other written materials

accompanying the software are protected by domestic and international intellectual property laws.

©2015-2016 Nintendo Co., Ltd.

©2015-2016 Tsunku♂

Trademarks are property of their respective owners. Nintendo 3DS is a trademark of Nintendo.

 V-1500198

 JRC 0017349JRCL

CTR-P-BPJP-00

This software allows you to send play data to Nintendo. For more information, see the Café section (p. 9).

- ◆ For information about connecting your Nintendo 3DS system to the internet, refer to the Operations Manual.

This software supports Nintendo Network™.



Nintendo Network is an online service which allows you to play with other players all over the world, download new add-on content and much more!

Online Precautions

- If you post, send or otherwise make available any information or content through wireless communication please make sure not to include any information that can be used to identify you personally, such as your name, email address, your address or your telephone number, as others may be allowed to see such information and content. In particular, when choosing a user name or nickname for your Mii™

characters, please do not use your real name as others may be able to view your user name and the nicknames of your Mii characters when using wireless communication.

- Friend codes are a part of a system that allows you to establish a friendship with other users, so that you can play, communicate and interact with people you know. If you exchange friend codes with strangers, there is a risk that you could receive information or messages with offensive language or inappropriate content and that strangers may see information about you that you do not want strangers to see. We therefore recommend that you do not give your friend codes to people you don't know.
- Do not engage in harmful, illegal, offensive or otherwise inappropriate activity that might cause problems for other users. In particular, do not post, send or otherwise make available any information or content that threatens, abuses or harasses other persons, infringes on the rights of others (such as copyrights, portrait rights, privacy rights, rights of publicity or trademarks) or that may make other people feel uncomfortable. In particular, when sending,

posting or making available photos, images or videos displaying other people, make sure to obtain their permission beforehand. If inappropriate conduct is reported or confirmed, you may be subject to penalties such as being banned from the Nintendo 3DS Services.

- Please note that Nintendo servers may become temporarily unavailable without prior notice due to maintenance following any problems, and online services for certain software may be discontinued.

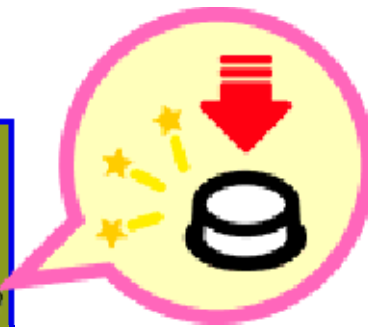
You can use the following Parental Controls setting to restrict certain features of this software.

- ◆ For more information about Parental Controls, refer to the Operations Manual.
- StreetPass
Restricts the sending/receiving of data via StreetPass.

Rhythm Paradise Megamix is a rhythm game, where you need to keep the beat to beat the game!

It's as simple as the push of a button or the touch of a stylus!

Button Controls



Press the button in time to the beat!



Stylus Controls



Touch the screen
in time to the beat!



- ◆ Select your preferred controls in "Settings" in the Café (p. 9).

Other Operations

Menus and the like can be navigated using buttons or the stylus.

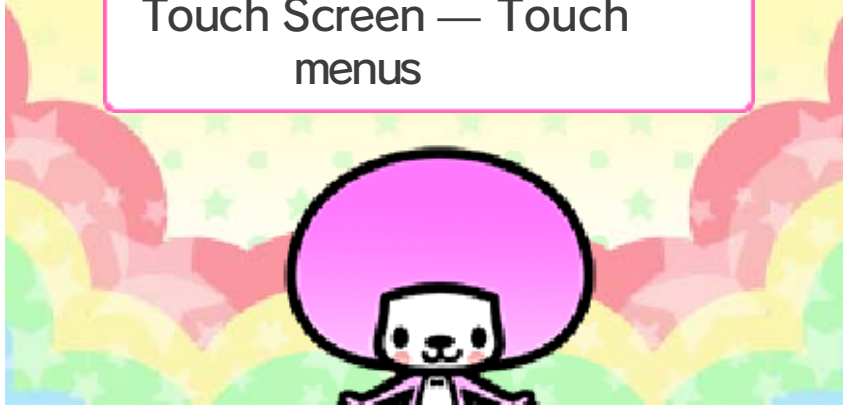
Select option — +

Confirm — (A)

Back — (B)

Pause —

Touch Screen — Touch
menus





Title Screen



Press **(A)** on the title screen to go to the save file selection screen.

Starting a New Game



Select an empty slot, choose a Mii and select "Start" to start a game from scratch. On this screen you can check the Flow for each save slot.



Flow

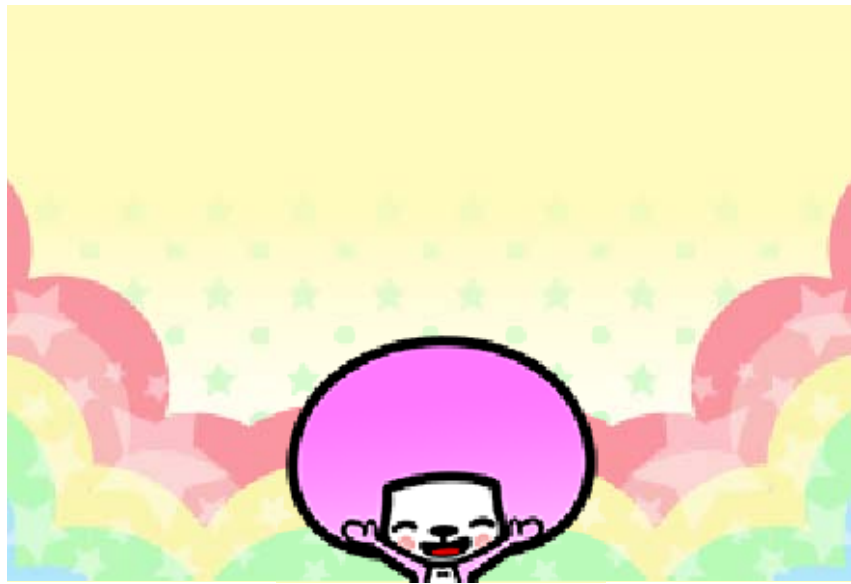
Your Flow number indicates your level of rhythm (max. 100). Play a lot of games and get high scores to raise your Flow! You can also check your Flow in the Museum (p. 9).

Continuing a Game



If you have already created save data, select that data and then choose "Start" to continue your game.

- ◆ After selecting your save data you can change your Mii by selecting "Change Mii".





Saving Data



Your progress will automatically be saved when you finish a rhythm game.

- Do not repeatedly reset the system or intentionally input incorrect controls. Do not remove any Game Card/SD card inserted into the system while saving. Make sure not to get dirt in the terminals. These actions could result in permanent data loss.
- Do not use external accessories or software to modify your save data, as this can lead to an inability to progress or loss of save data. Any modification is permanent, so be careful.



Deleting Data



Deleting Selected Data



Select a save file on the save file selection screen and select "Delete".

Deleting All Save Data



After you start the software and the Nintendo 3DS logo disappears, press and hold $\text{A}+\text{B}+\text{X}+\text{Y}$ all at the same time until the data deletion screen is displayed to delete all save data.

◆ Check your save data before deleting it! Once deleted, save data cannot be recovered.



A little creature called Tibby has fallen from the sky, and it's up to you to use your natural flow to beat various rhythm games and help him get back home again.



Making Progress



Once you've cleared a rhythm game, the next game will be unlocked. Similarly, clearing all the rhythm games in a stage will unlock the next stage.



Rhythm Game Selection Screen



1 Rhythm Game

Select this to start a rhythm game. After clearing a rhythm game, a pedestal will pop up and it will be either silver or gold depending on how well you scored.

2 Coin Total

3 Rhythm Game Information

Displays a description of the selected rhythm game and your high score. If you've acquired the Skill Star, it will be displayed here as ★.

4 Stage Name

5 Café (p. 9)

Takes you to the Café.

6 Open Map

From here you can return directly to previously cleared stages.



◆ Slide the stylus over the stage names on the right of the Touch Screen to scroll through them.

7 Challenges (p. 8)

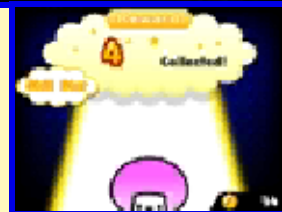
Takes you to Challenge Land.



Results Screen



After finishing a rhythm game, you can check your score on the results screen. Your score will fall into one of three categories: Try Again, OK or Superb. A score of OK or Superb counts as a passing grade.



Coins



Playing a rhythm game will net you coins as a reward. The number of coins you receive will vary depending on your score, and you can receive extra coins for acquiring a Skill Star or not missing a single beat. You can spend coins in several ways, including on the Gatekeepers' games, at the Shop in the Café and in Challenge Land.

Gates

As you progress through the story, you will come to Gates, where you'll spend coins to challenge the Gatekeepers in their rhythm games.



If You Can't Get into the Groove...



Rhythm Help Display

If you're having difficulty getting the hang of the rhythm in the practice mode of a rhythm game, the Rhythm Help Display will appear on the Touch Screen to help you visualise it.



Help From Rupert

If you fail to clear a rhythm game three times, Rupert will give you a shout. He'll let you skip a rhythm game - for a price!



- ◆ Rupert cannot help you skip remixes.



As you progress through the game, various challenges will be unlocked, including Perfect Campaigns and the Challenge Train.



Perfect Campaigns



When you're notified of a new Perfect Campaign, go to the wagon to the left of the Challenges Entrance to take it on.



Challenge Train



Take on challenges, either on your own or with friends. Selecting "With friends!" will



allow you to play with up to three other people. Once you've chosen your team, the leader decides which course to take on. Rhythm games may have different conditions for success, and at the end of the course you'll receive a reward.

Playing With Friends



Up to four players can play using wireless communication. At least one player must own a copy of the software.

- ◆ Players who do not own a copy of the software can play using Download Play.

You Will Need:

- One Nintendo 3DS system per player.
- At least one copy of the software.

Setup

- Hosting a Session
 1. At the Challenges Entrance, select "With friends!" and then "Host a Session".
 2. When the names of all participating players are displayed, press (A) to select a course.
- Joining a Session
 1. At the Challenges Entrance, select "With friends!".
 2. Select the name of the player whose session you want to join.

Sharing (Download Play)

If you own a copy of the software, you can share the Download Play version with other players so that they can ride the Challenge Train and also play the introduction.

- ◆ At least one copy of the software is needed to tackle the Challenge Train.

You Will Need:

- One Nintendo 3DS system per player.
- One copy of the software.

Setup

● Sharing

1. At the entrance to Challenge Land, touch "Sharing (Download Play)" on the Touch Screen.
2. Select "Yes!" and then "OK" to share the Download Play version.
3. When the name of the player you wish to share with is displayed, select "Send Download Play".


● Receiving

1. Select the Download Play icon in the HOME Menu and then touch "Open".
2. Select the Nintendo 3DS logo.
3. Select the name of the software.

- ◆ You may need to perform a system update. Follow the on-screen instructions to begin the update.

If you receive a message during the system update that the connection was unsuccessful, carry out the system update from the System Settings application.



During story mode, touch "Café" on the Touch Screen to go to the Café. Once inside, use  to navigate it.



Barista



The Café's barista is always ready to have a chat. Sometimes you'll find other customers sitting at the counter.



◆ When there's a customer present, you'll be able to talk to them instead.



Shop



You can spend coins on Rhythm Items or music. You can also exchange Flow Balls you have collected for new rhythm games.





Museum




Here you can replay the rhythm games you've already played, and check out your scores, Rhythm Items, music and epilogues. Talk to the curator to take a look at your badges, mascots and memories.



Goat Stable



In this game, use  to launch turnips into the pen and feed the goat. The more you feed her, the higher her level will get. Pick turnips from the garden beside the stable.



- ◆ When the goat is out for a walk, play more rhythm games while you wait for her to come back.



StreetPass Terrace (StreetPass™) (i))



If you have StreetPass activated, data will be exchanged automatically when



you pass by another player with StreetPass registered for this software. On StreetPass Terrace, you can view a list of players you've encountered via StreetPass. You can select a player to battle in a minigame, and if you defeat a player with a treasure chest you'll get a reward.

- ◆ You can challenge players as many times as you like.
- ◆ Sometimes you'll meet game characters here, too.

Registering StreetPass



You can activate StreetPass the first time you enter StreetPass Terrace.

- ◆ To deactivate StreetPass for this software, go to the in-game "Settings", then "StreetPass", and select "Change", then "Off".



Settings



Select "Settings" on the lower screen in the Café to change various game settings. You can also replay the introduction and return to the title screen from here.



Control Guide



Switch between button and stylus controls for rhythm games.

StreetPass



Activate or deactivate StreetPass for this software.

Sending Play Data (SpotPass)



You can enable or disable the sending of play data here. If this setting is enabled, the SpotPass feature will periodically connect to the internet (if available) while the system is in Sleep Mode and send your anonymous play data to Nintendo. This will happen even if the software is not running.

◆ Received play data will be used for future product development.

Timing Display




Turn the timing display on or off.



Manual




Touch  to open the software manual.



Audio Language Setting



Touch  in the bottom right of the Café screen to switch between the English soundtrack and the original Japanese soundtrack.



For product information, please visit the Nintendo website at:
www.nintendo.com/countryselector

For technical support and troubleshooting, please refer to the Operations Manual for your Nintendo 3DS system or visit:
support.nintendo.com