

GAME BOY ADVANCE

AGB-V49E-USA



DRILLDZER™

INSTRUCTION BOOKLET

PLEASE CAREFULLY READ THE SEPARATE HEALTH AND SAFETY PRECAUTIONS BOOKLET INCLUDED WITH THIS PRODUCT BEFORE USING YOUR NINTENDO® HARDWARE SYSTEM, GAME PAK OR ACCESSORY. THIS BOOKLET CONTAINS IMPORTANT HEALTH AND SAFETY INFORMATION.

IMPORTANT SAFETY INFORMATION: READ THE FOLLOWING WARNINGS BEFORE YOU OR YOUR CHILD PLAY VIDEO GAMES

⚠ WARNING - Seizures

- Some people (about 1 in 4000) may have seizures or blackouts triggered by light flashes or patterns, such as while watching TV or playing video games, even if they have never had a seizure before.
- Anyone who has had a seizure, loss of awareness, or other symptom linked to an epileptic condition should consult a doctor before playing a video game.
- Parents should watch when their children play video games. Stop playing and consult a doctor if you or your child have any of the following symptoms:

Convulsions

Altered vision

Eye or muscle twitching

Involuntary movements

Loss of awareness

Disorientation

To reduce the likelihood of a seizure when playing video games:

1. Sit or stand as far from the screen as possible.
2. Play video games on the smallest available television screen.
3. Do not play if you are tired or need sleep.
4. Play in a well-lit room.
5. Take a 10 to 15 minute break every hour.

⚠ WARNING - Repetitive Motion Injuries and Eyestrain

Playing video games can make your muscles, joints, skin or eyes hurt after a few hours. Follow these instructions to avoid problems such as tendinitis, carpal tunnel syndrome, skin irritation or eyestrain:

- Avoid excessive play. It is recommended that parents monitor their children for appropriate play.
- Take a 10 to 15 minute break every hour, even if you don't think you need it.
- If your hands, wrists or arms or eyes become tired or sore while playing, stop and rest them for several hours before playing again.
- If you continue to have sore hands, wrists or arms or eyes during or after play, stop playing and see a doctor.

⚠ WARNING - Battery Leakage

Leakage of battery acid can cause personal injury as well as damage to your Game Boy. If battery leakage occurs, thoroughly wash the affected skin and clothes. Keep battery acid away from your eyes and mouth. Leaking batteries may make popping sounds.

To avoid battery leakage:

- Do not mix used and new batteries (replace all batteries at the same time).
- Do not mix alkaline and carbon zinc batteries.
- Do not mix different brands of batteries.
- Do not use nickel cadmium batteries.
- Do not leave used batteries in the Game Boy. When the batteries are losing their charge, the power light may become dim, the game sounds may become weak, or the display screen may be blank. When this happens, promptly replace all used batteries with new batteries.
- Do not leave batteries in the Game Boy or accessory for long periods of non-use.
- Do not leave the power switch on after the batteries have lost their charge. When you finish using the Game Boy, always slide the power switch OFF.
- Do not recharge the batteries.
- Do not put the batteries in backwards. Make sure that the positive (+) and negative (-) ends are facing in the correct directions. Insert the negative end first. When removing batteries, remove the positive end first.
- Do not dispose of batteries in a fire.

The official seal is your assurance that this product is licensed or manufactured by Nintendo. Always look for this seal when buying video game systems, accessories, games and related products.



Nintendo does not license the sale or use of products without the Official Nintendo Seal.

THIS GAME PAK WILL WORK ONLY WITH THE GAME BOY® ADVANCE OR NINTENDO DS™ VIDEO GAME SYSTEMS.


CONTENTS

How to Play	8
Drilling	10
Basic Moves	12
Drill Skills	14
Starting the Game	16
Playing the Game	18
Trailer	20
Helpful Hints	24




© 2005-2006 NINTENDO/GAME FREAK INC. ALL RIGHTS, INCLUDING THE COPYRIGHTS OF GAME, SCENARIO, MUSIC AND PROGRAM, RESERVED BY NINTENDO AND GAME FREAK INC. TM, ® AND GAME BOY ADVANCE ARE TRADEMARKS OF NINTENDO. © 2006 NINTENDO.

STORY



Jill may look like an average schoolgirl, but she just happens to be the daughter of the big boss of the Red Dozers, a friendly gang of thieves! Growing up with the Red Dozers meant learning skills other kids never pick up. When she was just a toddler, she was already stomping around in a powerful Drill Dozer robot! The thieving life was good until the evil Skullker gang thugs ambushed her dad and even pilfered with her precious Red Diamond! While the big boss recuperates, it's up to Jill to lead the Red Dozers, demolish the Skullkers with her Drill Dozer, and get her Red Diamond back!



ABOUT THE RUMBLE PAK FEATURE

This game includes a built-in Rumble Pak™. Please read the following information before you play the game with the Rumble feature enabled.

The Rumble Pak includes built-in features that rumble while you play, providing realistic feedback.

TROUBLESHOOTING

The Rumble Pak is making a sound.

– When the Rumble Feature is on, the Rumble Pak will make sounds during game play.

Does not rumble

– Make sure the Rumble Feature is turned on in the game (see page 17 for more information on how to set the Rumble Feature).

– Make sure the edge connector of the Rumble Pak and the Nintendo Game Boy Advance system are not dirty.

Does not stop rumbling

– Make sure the edge connector of the Rumble Pak and the Nintendo Game Boy Advance system are not dirty.



HOW TO PLAY

When playing the game on the Nintendo DS, Nintendo Game Boy Advance SP, or the Nintendo Game Boy Player, please read the instruction manual of each system.

L BUTTON

- Spin your drill counter-clockwise.
- Shift up (while drilling).

+CONTROL PAD

- Move the cursor.
- Press left or right to walk.
- Press down to crouch.

SELECT

- Display the Equipment screen (see [pg.21](#) for more information).



R BUTTON

- Spin your drill clockwise.
- Shift up (while drilling).

A BUTTON

- Confirm selections.
- Jump.
- Press +Control Pad down and the A Button to Dash.

B BUTTON

- Cancel/Go back.
- Action.

START

- Start the game.
- Go to the Save screen (see [pg.22](#) for more information).
- Skip dialogue that you've already seen.

* Press the A Button, B Button, and START to reset the game.

* Please refer to pages 8-13 for more information on controls.



DRILLING

Jill's Drill Dozer is equipped with two powerful drills. Use them to plow through anything in your way!

SPIN DRILL

R or L Button

Press the R Button to spin your drill, or press the L Button to spin it the other way. Press the +Control Pad in the direction you want to move while drilling. Hold down the L or the R Button to keep the drill spinning.



RECOIL

R Button → L Button

Spin your drill and quickly reverse the drill's direction to recoil backwards. For example, press the R Button to spin the drill and then press the L Button.



SHIFT UP

R or L Button

You can upgrade your Drill Dozer with extra gears! As you progress, learning to shift to higher gears will be crucial.



1 Shifting up to the next gear dramatically increases your Drill Dozer's destructive power. Search for gearboxes and drill into them to get the gear inside.

2 The drill gauge will fill as you spin your drill. Keep spinning your drill until "SHIFT UP!" appears on the screen.

3 Once you see "SHIFT UP!", release the button for a split second and then press it again to shift up.

Remember to recoil back when you're about to bump into an enemy!

Upgrade your Drill Dozer with two extra gears to keep your drill spinning as long as you want!

BASIC MOVES

The Drill Dozer is a devastating piece of hardware that can pull off some incredible moves. Take the time to learn them all!

WALKING AND CROUCHING +Control Pad

Press the +Control Pad left or right to walk. Press the +Control Pad down to crouch.



DASH Press +Control Pad down + A Button

Press down on the +Control Pad to crouch, and then press the A Button to dash along the ground.



JUMP A Button

Press the A Button to jump. The height of your jump depends on how long you hold down the A Button.



ACTION B Button

Press the B Button when the B Button symbol appears above you to open doors, read signs, push switches, and perform other actions. You can also press the +Control Pad up or down while holding down the B Button to scout out the area around you.



YARRRG!
I'LL GET YOU!
Dash along the ground or over small gaps!

Sometimes, you'll have to use actions to complete puzzles!

NVAAA!



DRILL SKILLS

Use these advanced maneuvers in your fight against the skullers!



DRILLING

R Button or L Button



While you drill into a block on the ceiling or hovering in the air, you'll stay up in the air as long as the drill is spinning.

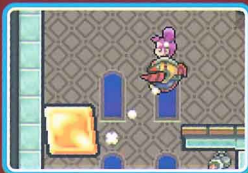


KICK BACK

R Button → L Button



Reverse the drill while drilling into a block to perform a kick, back move and fly backwards. For example, press the L Button to drill into a block, and then press the R Button to kick back.



SKIPPING GAPS

R or L Button & +Control Pad



Press and hold the +Control Pad in the direction you're drilling into a block to plow forward to the next block when it crumbles.



DEFLECTING

R Button or L Button



Use your drill to deflect enemy bullets. Beware: some enemies attack with weapons that can't be deflected, such as a bomb.



STARTING THE GAME

The health and safety screen will appear when you turn on the power. Once you've read the information, press any button to advance to the title screen.

WARNING-HEALTH AND SAFETY

BEFORE PLAYING, READ THE HEALTH AND SAFETY PRECAUTIONS BOOKLET FOR IMPORTANT INFORMATION ABOUT YOUR HEALTH AND SAFETY.

TO GET AN EXTRA COPY FOR YOUR REGION, GO ONLINE AT www.nintendo.com/healthsafety/



SAVE SELECTION

Press START on the title screen to access the save-selection screen. Here, you can access your saved games.



Playing for the first time

The first time you play, select New Game.

Continuing a saved game

Choose the save game you want to resume.

Changing game settings

You can change the following settings in the menu located below the save data. Follow the instructions on the screen to make adjustments.

Copy / Erase

You can copy or erase saved data. When copying data, choose the data you want to copy and then select where you want to copy it to. When erasing data, select the data you want to erase.

Sound

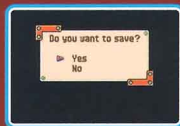
Choose between mono or stereo sound.

Rumble Feature

Choose on or off.

Saving your progress

You can save your progress on the Save screen. See [pg.22](#) for more information.



OOPS!

You'll love the Rumble Feature!

Be careful! If you erase saved data, it's gone forever!

WHERE IS SHE!



PLAYING THE GAME

Take control of Jill's powerful Drill Dozer and demolish your way through area after area packed with enemies!

STAGE SCREEN

Use all of the moves at your disposal to make your way to the end of the area. Just touch an item to grab it. See [pg.25](#) for more information.



Gears

Find gears to gain the ability to shift up! See [pg.11](#) for more information.

Energy

The Drill Dozer's energy bar will fall every time you take damage.

Treasures

Touch treasure chests to get the loot inside! See [pg.22](#) for more information.



SHIFT UP!



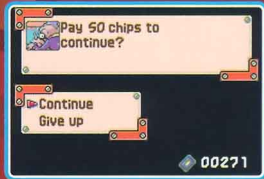
When you find a gear, the Drill Dozer will be automatically upgraded with the ability to shift up. The Drill Dozer can carry up to three gears. Due to wear and tear, you will lose all of your gears when you complete an area.



GAME OVER



Your game is over when you run out of energy. However, you can pay 50 Chips to continue. See [pg.25](#) for more information.





TRAILER

You will be taken back to the trailer every time you complete an area. There, you can buy upgrades, view your treasures, save your game, and more!



GETTING AROUND THE TRAILER



Each character in the trailer has a different area of the trailer. Select a character with the +Control Pad and press the A Button to move to that area.



MAP



Here, you can choose the area you want to travel to. First select the area, and then choose the stage in that area you want to enter. Select the Red Dozers' Training Course to practice your skills.



EQUIPMENT



Your Drill Dozer's current equipment will be displayed here. You can also view this screen by pressing SELECT during play.

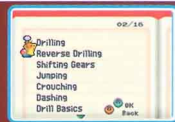


Drill Bit	The drill bit you currently have equipped.
Drill Type	View the drill type you have equipped. Sometimes, you can use special equipment.
Gears	The gears you have equipped.
Energy	The current and maximum energy capacity of your Drill Dozer.
Chips	The number of Chips you have collected.



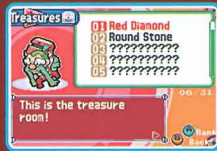
Help

Press the A Button to view the help screen. Use the +Control Pad to select a subject, then press A to view it.



TREASURES

Go here to see a list of treasures you've found. Use the +Control Pad to select a treasure and view its description.



SAVE

Go to this area to save your game or put your system to sleep. Select an option from the menu below. You can also reach this screen by pressing START while you play.



Save	Save your progress.
Sleep	Put your Game Boy Advance system in sleep mode. Press SELECT while holding down both the L and R Buttons to wake up your system.
Exit	Return to the trailer. This option only appears when you're in an area.

SHOP

The shop will only appear after you've progressed a ways into the game. Here, you can spend your hard-earned Chips to buy items and upgrades. See [pg.25](#) for more information.



Collect treasures!

Treasure chests have been hidden all over the world. It's up to you to find them! They're often hidden in hard-to-reach places. Sometimes, you may even need a more powerful drill bit to get to them! Can you collect all of the treasures in an area?



HELPFUL HINTS

Some helpful hints are listed below. Be sure to check the help file (see [pg.21](#) for more info) to learn how to use them.

CRACKED WALLS

When you see cracked wall, drill into it. You may find some loot!



EQUIPMENT FOR EVERY OCCASION

As you play the game and find more equipment, you'll be able to operate underwater and even fly in the air!



COLLECT ITEMS

Smash open item blocks with your drill to find items. You can spend Chips at the shop to get items, too!



Items you can find in an area.

Energy	Recovers your energy. How much you recover depends on the size.
Chips	Spend chips at the shop to get new items and upgrades!

Items you can buy at the shop.

Energy Tank	Increases your maximum energy level.
Super Bit	This strong drill bit can crush solid rock.
Mega Bit	The most powerful drill bit. It can smash even the hardest rocks!
Maps	A new area will appear in the map room.

WHERE ARE THEY?

Always smash open item and gear boxes!

Be safe: buy Energy Tanks!

CREDITS

DIRECTOR

KEN SUGIMORI

CHARACTER DESIGN

HIRONOBU YOSHIDA

LEAD PROGRAMMER

SOHSUKE TAMADA

MUSIC & SOUND EFFECTS

GO ICHINOSE

SATOSHI NOHARA

SCENARIO WRITERS

AKIHITO TOMISAWA

KENJI MATSUSHIMA

VOICE ACTING

SACHIKO HAMANO

HIRONOBU YOSHIDA

NAOKO YANASE

SATOSHI NOHARA

PROGRAMMING

KEITA KAGAYA

YOSHINORI MATSUDA

DAISUKE GOTOH

MASAO TAYA

SATOSHI NOHARA

HISASHI SOGABE

GRAPHIC DESIGN

HIRONOBU YOSHIDA

MOTOFUMI FUJIWARA

TAKAO UNNO

HIROKI FUCHINO

KENKICHI TOYAMA

GAME DESIGN

KEN SUGIMORI

KENJI MATSUSHIMA

TADASHI TAKAHASHI

TETSUJI OHTA

TERUYUKI SHIMOYAMADA

SHIGERU OHMORI

ADDITIONAL TUNING

SHIGERU OHMORI

JUNICHI MASUDA

TAKESHI KAWACHIMARU

DEBUG

TETSUYA WATANABE

AKITO MORI

HIROYUKI NAKAMURA

TOMOMICHI OHTA

MIYUKI IWASAWA

NOZOMU SAITOH

TOMOYA TAKAHASHI

SUPER MARIO CLUB

DEBUG SUPPORT

SHUICHI NARUSAWA

SPECIAL THANKS

TSUNEKAZU ISHIHARA

YUURI SAKURAI

HIROMI SAGAWA

YUMI FUNASAKA

NAOKO YANASE

PROJECT MANAGEMENT

HITOSHI YAMAGAMI

AZUSA TAJIMA

PRODUCER

JUNICHI MASUDA

EXECUTIVE PRODUCERS

SATOSHI TAJIRI

SATORU IWATA

GAME FREAK inc.

NINTENDO CO.,Ltd.

LOCALIZATION

THOMAS CONNERY

REIKO NINOMIYA

ERIK PETERSON

LOCALIZATION MANAGEMENT

NATE BIHLDRORFF

JEFF MILLER

LESLIE SWAN

BILL TRINEN

NOA TESTING DEPT.

(NOA Product Testing Staff)

YOSHINOBU MANTANI

SHUJI HASHIMOTO

ROB CROMBIE

KYLE HUDSON

ERIC BUSH

SEAN EGAN

JIM HOLDEMAN

MIKA KUROSAWA

TERESA LILLYGREN

TOMOKO MIKAMI

PATRIK TAYLOR

PACKAGE & MANUAL

HITOMI ROSS

NOTES



IMPORTANT LEGAL INFORMATION:

Copying of any video game for any Nintendo system is illegal and is strictly prohibited by domestic and international intellectual property laws. “Back-up” or “archival” copies are not authorized and are not necessary to protect your software. Violators will be prosecuted.

This Nintendo game is not designed for use with any unauthorized copying device or any unlicensed accessory. Use of any such device will invalidate your Nintendo product warranty. Nintendo (and/or any Nintendo licensee or distributor) is not responsible for any damage or loss caused by the use of any such device. If use of such device causes your game to stop operating, disconnect the device carefully to avoid damage and resume normal game play. If your game ceases to operate and you have no device attached to it, please contact Nintendo Customer Service (see below).

The contents of this notice do not interfere with your statutory rights.

This booklet and other printed materials accompanying this game are protected by domestic and international intellectual property laws.

WARRANTY AND SERVICE INFORMATION

HARDWARE WARRANTY

Nintendo of America Inc. (“Nintendo”) warrants to the original purchaser that the hardware product shall be free from defects in material and workmanship for twelve (12) months from the date of purchase. If a defect covered by this warranty occurs during this warranty period, Nintendo will repair or replace the defective hardware product or component, free of charge. The original purchaser is entitled to this warranty only if the date of purchase is registered at point of sale or the consumer can demonstrate, to Nintendo’s satisfaction, that the product was purchased within the last 12 months.

GAME & ACCESSORY WARRANTY

Nintendo warrants to the original purchaser that the product (games and accessories) shall be free from defects in material and workmanship for a period of three (3) months from the date of purchase. If a defect covered by this warranty occurs during this three (3) month warranty period, Nintendo will repair or replace the defective product, free of charge.

WARRANTY LIMITATIONS

THIS WARRANTY SHALL NOT APPLY IF THIS PRODUCT: (a) IS USED WITH PRODUCTS NOT SOLD OR LICENSED BY NINTENDO (INCLUDING, BUT NOT LIMITED TO, NON-LICENSED GAME ENHANCEMENT AND COPIER DEVICES, ADAPTERS, AND POWER SUPPLIES); (b) IS USED FOR COMMERCIAL PURPOSES (INCLUDING RENTAL); (c) IS MODIFIED OR TAMPERED WITH; (d) IS DAMAGED BY NEGLIGENCE, ACCIDENT, UNREASONABLE USE, OR BY OTHER CAUSES UNRELATED TO DEFECTIVE MATERIALS OR WORKMANSHIP; OR (e) HAS HAD THE SERIAL NUMBER ALTERED, DEFACED OR REMOVED.

ANY APPLICABLE IMPLIED WARRANTIES, INCLUDING WARRANTIES OF MERCHANTABILITY AND FITNESS FOR A PARTICULAR PURPOSE, ARE HEREBY LIMITED IN DURATION TO THE WARRANTY PERIODS DESCRIBED ABOVE (12 MONTHS OR 3 MONTHS, AS APPLICABLE). IN NO EVENT SHALL NINTENDO BE LIABLE FOR CONSEQUENTIAL OR INCIDENTAL DAMAGES RESULTING FROM THE BREACH OF ANY IMPLIED OR EXPRESS WARRANTIES. SOME STATES DO NOT ALLOW LIMITATIONS ON HOW LONG AN IMPLIED WARRANTY LASTS OR EXCLUSION OF CONSEQUENTIAL OR INCIDENTAL DAMAGES, SO THE ABOVE LIMITATIONS MAY NOT APPLY TO YOU.

This warranty gives you specific legal rights. You may also have other rights which vary from state to state or province to province.

This warranty is only valid in the United States and Canada.

Nintendo®



PRINTED IN JAPAN